



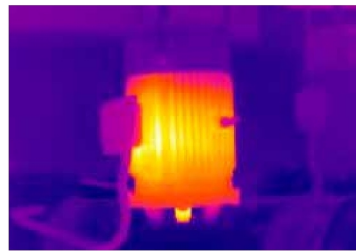
Model: 9885

CE
EMC
EN: 61326-1
EN: 61010-1

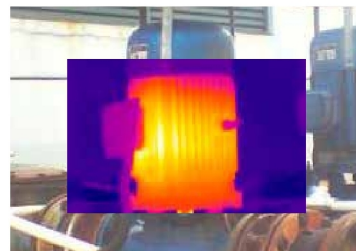
9885/9887 is High Performance Thermal Imager with high resolution 384x288, easy to help you to find the potential problems with innovation features and functionality, you can perform infrared inspections faster and more efficiently and thoroughly document problem areas for additional following:

Key features

- 384x288 High Performance & high resolution Thermal Imager with TFT color LCD display
- Professional IR-optical focus system ensures that images are in good focus for optimum image clarity and scanning convenience.
- Capture additional measurements fast and conveniently with wireless modules (9887 only)
- Meterbox analysis system—quickly identify and keep track of inspection locations by adding digital images of important information and surrounding areas
- Find problems faster and easier with accurately identify potential issues by combining digital and IR images
- Picture in Picture function Displays thermal image super-imposed over a digital image
- LED Flashlight allows the visual camera and fusion to be used in poorly lit environments
- Wide Temperature Range from -20 to +400°C targeting electrical and industrial applications
- ±2% Accuracy for reliable temperature measurement
- The image rotation has the ability to automatically rotate the active image
- Audio recorded with the video image acts a speaker to listen to audio recorded with the video image
- Capacitive touch screen is easier, productive and effective to operate it
- Lithium polymer Rechargeable Battery lasts >4hrs continuous use; replaceable
- An easy-to-access thumbnail image gallery helps you to quickly review and find your thermal images.
- Area (Min/Max) mode shows the Minimum or the Maximum Temperature reading in the selected area
- A conveniently located button activates the laser pointer that will help you associate the hot or cold spot in the thermal image with the real physical target in the field.
- In order to adapt the device to every situation both wide angle and tele-lenses are available.
- Equipped with standard video, USB outputs as well as a removable SD card.
- The IR video can be streamed to a PC via USB or wifi (DT-9887 only).



Full Infrared



Picture-in-Picture



Color Alarm



Full visible light



Model: 9887

Wi-Fi Connectivity/
Bluetooth Communication



11mm Lens
RL-11



38mm Lens RL-38
22mm Lens RL-22



Size(HxWxD): 243mm x 103mm x 160mm **Weight:** 920g
Accessories: Hard transport case, 22mm lens, Sun Visor, Tripod base, AC charger/Power supply, Earphone, Battery, Camera lens cap, software CD-ROM, Handstrap, micro SD card, USB cable & RCA cable, Gift box.

Specifications	9885	9887	
Imaging and optical data			
IR resolution	384x288pixels, focal plane array (FPA), uncooled microbolometer	*	*
Field of View (FOV)	47.1°x 36.2°	*	*
Minimum focus distance	0.3m (0.99ft.)	*	*
Spatial resolution (IFOV)	2.28 mrad	*	*
Thermal sensitivity/NETD	< 0.05°C @ +30°C (+86°F) / 50 mK	*	*
Image frequency	50Hz	*	*
Focus	Manual	*	*
Zoom	32x continuous, digital zoom	*	*
Rotate	0-360°, continuous change by 1°	*	*
Image presentation			
Display	3.5" TFT, capacitive touch screen	*	*
Image modes	IR image, visual image, picture in picture	*	*
Picture in Picture	IR area on visual image or visual image area on IR	*	*
Color palettes	GRAY/GRAY IRON/IRON/RAINBOW/FEATHER	*	*
Measurement			
Object temperature range	Low range: -20°C to +150°C (-4°F to +302°F) High range: 0°C to +400°C (+32°F to +752°F)	*	*
Accuracy	±2°C (±3.6°F) or ±2% of reading	*	*
Measurement analysis			
Spotmeter	3	*	*
Emissivity adjustable	0.01~1.0 Adjustable	*	*
Emissivity table	Emissivity table of predefined materials	*	*
Line	2 lines(horizontal and vertical)	*	*
Area	3 boxes with max./min./average	*	*
Automatic hot /cold detection	Auto hot or cold spotmeter marks	*	*
Isotherm	Detect high/low temperature/interval	*	*
Measurement corrections	Emissivity, ambient temperature, distance, relative humidity, offset temperature	*	*
Set-up			
Laser / floodlight	< class2 / white LED floodlight	*	*
Set-up commands	Local adaptation of units, language, date and time formats, information of camera	*	*
Language selection	English, Chinese, French, German, Spanish	*	*
Storage of videos			
Storage media	4Gbytes Micro SD card	*	*
Video storage format	Standard MPEG-4, 640x480@30fps, on memory card > 60 minutes	*	*
Video storage mode	IR/visual images; simultaneous storage of IR and visual images	*	*
Storage of images			
Image storage format	Standard JPEG, including measurement data, on memory card > 1000 pictures	*	*
Image storage mode	IR/visual images; simultaneous storage of IR and visual images	*	*
Digital camera			
Built-in visible light digital camera	640x480 Pixels	*	*
Data communication interfaces			
USB interfaces	USB-mini, data transform between camera and PC remote control, live video	*	*
Wi-Fi connectivity	Wi-Fi connectivity allows to send images and data to mobile devices remote control, live video	*	*
Video out	Composite(PAL and NTSC)	*	*
Power system			
Battery	Lithium polymer battery, 4 hours operating time	*	*
Input voltage	DC 9V to 12V	*	*
Charging system	In camera (AC adapter)	*	*
Power management	Automatic shutdown and sleep mode (user selectable)	*	*
Environmental data			
Operating temp range	-20°C to +50°C (-4°F to +122°F)	*	*
Storage temp range	-40°C to +70°C (-40°F to +158°F)	*	*
Relative humidity (operating and storage)	10%RH~90%RH	*	*
Encapsulation	IP65	*	*
Drop test	2m	*	*
Bump	25g(IEC60068-2-29)	*	*
Vibration	2g(IEC60068-2-6)	*	*



Applications

- Plant/General Maintenance
- HVAC/R
- Transportation/Automotive
- Cooling and Reheating
- Serving areas
- Food service Equipment
- Cold storage

9873 160x120 Thermal Imager is basic one only with full IR, 9875/9877 160x120 High Performance Thermal Imager is easy to help you to find the potential problems with innovation features and functionality, you can perform infrared inspections faster and more efficiently and thoroughly document problem areas for additional following:

Key features

- 160x120 High Performance Thermal Imager with high resolution TFT color LCD display
- Professional IR-optical focus system ensures that images are in good focus for optimum image clarity and scanning convenience.
- Capture additional measurements fast and conveniently with wireless modules (9877 only)
- Meterbox analysis system—quickly identify and keep track of inspection locations by adding digital images of important information and surrounding areas
- Find problems faster and easier with accurately identify potential issues by combining digital and IR images
- Picture in Picture function Displays thermal image super-imposed over a digital image
- LED Flashlight allows the visual camera and fusion to be used in poorly lit environments
- Wide Temperature Range from -20° to +400°C targeting electrical and industrial applications
- ±2% Accuracy for reliable temperature measurement
- The image rotation has the ability to automatically rotate the active image
- Audio recorded with the video image acts a speaker to listen to audio recorded with the video image
- Capacitive touch screen is easier, productive and effective to operate it
- Lithium polymer Rechargeable Battery lasts >4hrs continuous use; replaceable
- An easy-to-access thumbnail image gallery helps you to quickly review and find your thermal images.
- Area (Min/Max) Mode shows the Minimum or the Maximum Temperature reading in the selected area
- A conveniently located button activates the laser pointer that will help you associate the hot or cold spot in the thermal image with the real physical target in the field.
- In order to adapt the device to every situation both wide angle and tele-lenses are available.
- Equipped with standard video, USB outputs as well as a removable SD card.
- The IR video can be streamed to a PC via USB or wifi (DT-9877 only).



Model: 9875/9877

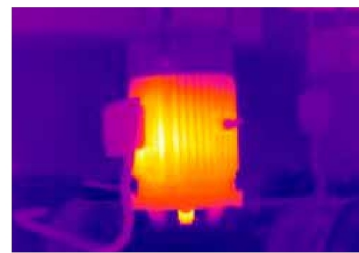
Wi-Fi Connectivity/
Bluetooth Communication



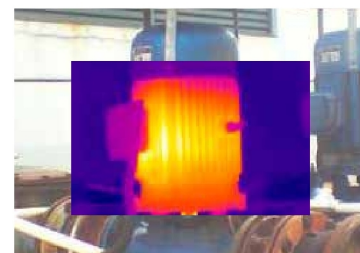
Model: 9873



EMC
EN: 61326-1
EN: 61010-1



Full Infrared



Picture-in-Picture



Color Alarm



Full visible light



33mm Lens RL-33 22mm Lens RL-22



Size(HxWxD): 243mm x 103mm x 160mm **Weight:** 920g
Accessories: Hard transport case (9875,9877), 7.5mm lens, Sun Visor, Tripod base, AC charger/Power supply, Earphone, Battery, Camera lens cap, software CD-ROM, Handstrap, micro SD card, USB cable & RCA cable, Gift box.

Specifications		9871	9873B	9873	9875	9877
Imaging and optical data						
IR resolution	160x120pixels, focal plane array (FPA), uncooled microbolometer	80x80	*	*	*	*
Field of View (FOV)	29.8° × 22.6°	17°x17°	*	*	*	*
Minimum focus distance	0.2m (0.66ft.)	0.3m (0.99ft.)	*	*	*	*
Spatial resolution	(IFOV) 3.33 mrad	3.78mrad	*	*	*	*
Thermal sensitivity/NETD	< 0.08°C @ +30°C (+86°F) / 80 mK	< 0.1°C	*	*	*	*
Image frequency	50Hz	*	*	*	*	*
Focus	Manual	*	*	*	*	*
Zoom	1-20x continuous, digital zoom	*	*	*	*	*
Rotate	0-360°, continuous change by 1°	*	*	*	*	*
Image presentation						
Display	3.5" TFT, capacitive touch screen	*	*	*	*	*
Image modes	IR image, visual image, picture in picture	IR image only	*	*	*	*
Picture in Picture	IR area on visual image or visual image area on IR	None	*	*	*	*
Color palettes	GRAY/GRAY IRON/IRON/RAINBOW/FEATHER	*	*	*	*	*
Measurement						
Object temperature range	Low range: -20°C to +150°C (-4°F to +302°F) High range: 0°C to +400°C (+32°F to +752°F)	*	*	*	*	*
Accuracy	±2°C (±3.6°F) or ±2% of reading	*	*	*	*	*
Measurement analysis						
Spotmeter	3	*	*	*	*	*
Emissivity adjustable	0.01-1.0 Adjustable	*	*	*	*	*
Emissivity table	Emissivity table of predefined materials	*	*	*	*	*
Line	2 lines(horizontal and vertical)	None	*	*	*	*
Area	3 boxes with max. /min. /average	None	*	*	*	*
Automatic hot /cold detection	Auto hot or cold spotmeter marks	*	*	*	*	*
Isotherm	Detect high/low temperature/interval	None	*	*	*	*
Measurement corrections	Emissivity, ambient temperature, distance, relative humidity, offset temperature	*	*	*	*	*
Set-up						
Laser / floodlight	< class2 / white LED floodlight	None	*	*	*	*
Set-up commands	Local adaptation of units, language, date and time formats, information of camera	*	*	*	*	*
Language selection	English, Chinese, French, German, Spanish	*	*	*	*	*
Storage of videos/images						
Storage media	4Gbytes Micro SD card	*	*	*	*	*
Video storage format	Standard MPEG-4, 640x480@30fps, on memory card > 60 minutes	*	*	*	*	*
Image storage format	Standard JPEG, including measurement data, on memory card > 1000 pictures	*	*	*	*	*
Storage mode	IR/visual images; simultaneous storage of IR and visual images	IR image only	*	*	*	*
Digital camera						
Built-in visible light digital camera	640x480 Pixels	None	*	*	*	*
Data communication interfaces						
USB interfaces	USB-mini, data transform between camera and PC remote control, live video	*	*	*	*	*
Wi-Fi connectivity	Wi-Fi connectivity allows to send images and data to mobile devices remote control, live video	None	*	*	*	*
Video out	Composite(PAL and NTSC)	*	*	*	*	*
Power system						
Battery	Lithium polymer battery, 4 hours operating time	*	*	*	*	*
Input voltage	DC 9V to 12V	*	*	*	*	*
Charging system	In camera (AC adapter)	*	*	*	*	*
Power management	Automatic shutdown and sleep mode (user selectable)	*	*	*	*	*
Environmental data						
Operating temp range	-20°C to +50°C (-4°F to +122°F)	*	*	*	*	*
Storage temp range	-40°C to +70°C (-40°F to +158°F)	*	*	*	*	*
Relative humidity (operating and storage)	10%RH-90%RH	*	*	*	*	*
Encapsulation	IP65	*	*	*	*	*
Drop test	2m	*	*	*	*	*
Bump	25g(IEC60068-2-29)	*	*	*	*	*
Vibration	2g(IEC60068-2-6)	*	*	*	*	*



Applications

- Plant/General Maintenance
- HVAC/R
- Transportation/Automotive
- Cooling and Reheating
- Serving areas
- Food service Equipment
- Cold storage